

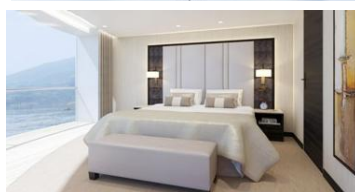
## CYA-6 THREE GORGES CRUISE 6 DAYS

- DAY 01 **MANILA – CHONGQING (D)**  
Fly Chongqing (with transit Shanghai/Guangzhou/Chongqing).
- DAY 02 **CHONGQING – WULONG – CHONGQING (B, L, D)**  
Coach to **Wulong**. Tour **Wulong Scenic Area & The Natural Bridges (UNESCO World Heritage)** (w/cable car, eco bus, elevator). Same day, coach back to Chongqing. After dinner, transfer-in to cruise ship for check-in.
- DAY 03 **THREE GORGES SIGHTSEEING (B, L, D)**  
Sailing through Yangtze River, Shore excursion of **Shibaozhai**.
- DAY 04 **THREE GORGES SIGHTSEEING (B, L, D)**  
Sail through **Qutang Gorge & Wu Gorge**. Shore excursion of **Shennv Stream**.
- DAY 05 **THREE GORGES – YICHANG (B, L, D)**  
Disembark at Maoping Pier of Yichang. Visit the **Three Gorges Dam Project**. After lunch, tour **Chexi Folk Scenic Area**.
- DAY 06 **YICHANG – WUHAN – MANILA (B)**  
Bullet train to Wuhan. Same day, fly to Manila (with transit Shanghai/Guangzhou/Hongkong). Home sweet home.



## CYA-C9A-8 THREE GORGES CRUISE, ZHANGJIAJIE 8 DAYS

- DAY 01-04 Same as the CYA-6
- DAY 05 **THREE GORGES – YICHANG – ZHANGJIAJIE (B, L, D)**  
Visit the **Three Gorges Project**. Disembark at Yichang. Same day, coach to Zhangjiajie.
- DAY 06 **ZHANGJIAJIE (B, L, D)**  
Tour **Tianmenshan Scenic Area (w/Cable car, Shuttle bus & Glass bottom Skywalk)**. Tour **Zhangjiajie Glass Bottom bridge**, to experience the Longest (430m), Highest (300m) Glass Bottom bridge in the world. After dinner, enjoy **Tianmen Fox Fairy Show (Upgraded Seat)**.
- DAY 07 **ZHANGJIAJIE (B, L, D)**  
**VIA GUANGZHOU**: Tour **Yellow Dragon Cave (W/Boat ride & Golf car Transfer)**. After lunch, tour Mt. **Tianzi (Avatar Hallelujah Mountain" & the First Bridge under Heaven) (with super elevator / cable car ride)**.  
**VIA SHANGHAI**: Itinerary same as via Guangzhou. Same day, fly to Shanghai.
- DAY 08 **ZHANGJIAJIE – GUANGZHOU – MANILA (B)**  
**VIA GUANGZHOU**: Fly to Manila (with transit Guangzhou). Home sweet home.  
**SHANGHAI – MANILA (B, L)**  
**VIA SHANGHAI**: Morning free own leisure. After lunch, fly to Manila. Home Sweet Home.



※※NO COMPULSORY TOURIST SHOP / IN COACH VENDING/OPTIONAL TOURS ALLOWED※※

Note: Changes of transportation schedules may cause the lengthening/shortening of the itineraries in some tour destinations.

City	Hotels
CHONGQING	MARRIOTT/ LE MERIDIEN
YICHANG	CROWNE PLAZA
THREE GORGES	CENTURY PARAGON (TUE DEP) / CENTURY LEGEND (SAT DEP) <b>NEW! CENTURY GLORY (MON DEP) - LARGEST RIVER CRUISE SHIP IN THE WORLD</b>
ZHANGJIAJIE	SUNSHINE
SHANGHAI	MAJESTY PLAZA / JINJIANG TOWER

DEP DATES	TOUR	AIRLINE	PRICE / PAX	EBD / PAX
AUG 19, 26	CYA-6	CZ/ MU/ CX	\$ 1378	50 Days : 58 35 Days : 38
SEP 09, 16			\$ 1408	
SEP 22 <b>CENTURY GLORY MAIDEN VOYAGE</b>			\$ 1598	
OCT 13, 20			\$ 1498	
OCT 27, NOV 03, 10			\$ 1468	
AUG 19, 26	CYA-C9A-8	CZ/MU	\$ 1728	50 Days : \$ 68 35 Days : \$ 48
SEP 09, 16			\$ 1918	
SEP 22 <b>CENTURY GLORY MAIDEN VOYAGE</b>			\$ 1818	
OCT 13, 20			\$ 1758	
OCT 27, NOV 03, 10				



**AUB Credit Cards**  
Use your **AUB** Rewards points to pay for your Travel bookings & avail of a special discount with us! For more information visit [www.aub.com.ph/creditcards/rewards](http://www.aub.com.ph/creditcards/rewards)

INCLUSIONS	EXCLUSIONS / PAX	BOOKING CONDITIONS
<ul style="list-style-type: none"> <li>✓ Roundtrip International ticket &amp; China Domestic Ticket</li> <li>✓ Bullet train Yichang - Wuhan</li> <li>✓ Hotel Accommodation (Twn. &amp; Trp.)</li> <li>✓ Meals Specified in the Itinerary</li> <li>✓ All transfer &amp; English Speaking Guide</li> <li>✓ Sightseeing Tours with entrance fees</li> <li>✓ Travel Insurance - Oriental Assurance (MAPFRE ASISTENCIA) - UNIVERSAL                             <ul style="list-style-type: none"> <li>✦ FOR OVER 70 - 90 Y/O ADD \$5/PAX/DAY SURCHARGE</li> <li>✦ FOR OVER 90 Y/O NO INSURANCE COVERAGE - LESS \$4/PAX/DAY FROM TOUR COST</li> </ul> </li> </ul>	<ul style="list-style-type: none"> <li>✗ Phil. Travel Taxes <b>P 1620.00</b></li> <li>✗ Terminal fee                             <ul style="list-style-type: none"> <li>Phil Terminal Fee <b>P 550.00</b></li> <li>China International Terminal Fee <b>\$ 37.00 (CZ/MU) \$ 86.00(CX)</b></li> </ul> </li> <li>✗ China Visa (Fil. Ppt.) – SINGLE ENTRY <b>P 1700.00</b></li> <li>✗ Tips for Tour Guide &amp; Driver <b>\$ 4.00/Day/Pax</b></li> <li>✗ Tips for Porters &amp; Bell boys</li> </ul>	<ul style="list-style-type: none"> <li>• \$ 200 Booking Deposit Upon Confirmation.</li> <li>• Deposit is Non-refundable.</li> <li>• Any unused portion is non-refundable</li> <li>• For the pax who cannot pass immigration process in any Int'l airport, the tour cost is non- refundable</li> </ul>

### CHINA VISA REQUIREMENTS

- ▶ Visa Application Form
- ▶ 2PC Passport size (White Background)
- ▶ Original Passport - 6 months valid (With Previous China visa 4 working days processing, Without Previous China Visa 7 working days processing)

⚡ RATES & FLIGHT DETAILS ARE SUBJECT TO CHANGE WITHOUT PRIOR NOTICE. ⚡ **BOOK & DEPOSIT 35 / 50 DAYS BEFORE THE DEPARTURE TO AVAIL EARLY BIRD DISCOUNT (EBD)**  
 ⚡ RATES ARE BASED ON JOINING GROUP DEPARTURE. ⚡ INTERNATIONAL TICKETS & HOTELS ARE SUBJECT FOR AVAILABILITY & SUBJECT FOR BUY UP & FARE DIFFERENCE.

⚡ **RATES ARE FOR PHIL PASSPORT HOLDER ONLY, ADDITIONAL SURCHARGES APPLY FOR OTHER FOREIGN COUNTRIES.**



## PANDA TRAVEL SERVICE INC. (GSA)

**Binondo Office:**  
479 - 481 Sto. Cristo St.,  
Binondo, Manila  
Tel: (632) 242-2585  
Fax: (632) 242-2652

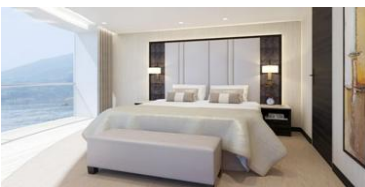
**Greenhills Office:**  
2/F G SQUARE Building, 212 Wilson  
Street, Greenhills, San Juan City  
Tel: (632) 723-2712; 723-2639;  
723-3491; 5704044  
Fax: (632) 501-6120

**Email:**  
panda@pandatour.com  
marketing@pandatour.com  
**Website:**  
www.chinapanorama.com



## CYA-6 武隆風景區、三峽暢游 6 天

- 第1天 馬尼拉—重慶 (D)  
乘飛機往上海/廣州/香港。當天乘飛往重慶。
- 第2天 重慶—武隆—重慶—三峽游(B.L.D)  
乘汽車往武隆風景區 (世界自然遺產) (2.5hrs), 游覽天坑、天生三硤景區 (含電瓶車, 環保車, 觀光電梯)。當天返回重慶, 晚餐後登船。
- 第3天 三峽游(B.L.D)  
船上介紹三峽大壩工程, 上岸游覽石寶寨。
- 第4天 三峽游(B.L.D)  
游覽瞿塘峽、巫峽、換乘游艇游覽神女溪。
- 第5天 三峽游—宜昌(B.L.D)  
茅坪碼頭離船, 乘車參觀三峽大壩工程, 午餐後游覽車溪三峽人家民族風情園。
- 第6天 宜昌—武漢—馬尼拉 (B)  
乘高鐵往武漢。乘飛機上海/廣州/香港中轉往馬尼拉, 返回溫暖的家。



## CYA-C9A-8 三峽暢游、張家界 8 天

- 第1天至第4天同CYA-6
- 第5天 三峽—宜昌—張家界(B.L.D)  
茅坪碼頭離船, 乘車參觀三峽大壩工程, 當天汽車往張家界。
- 第6天 張家界(B.L.D)  
游覽天門山風景區, 乘坐全新世界最長索道游覽天門山 (含觀光環保班車及鬼谷玻璃棧道)。游覽張家界大峽谷玻璃橋。晚上觀賞《天門狐仙》表演 (升級位)。
- 第7天 張家界(B.L.D)  
經廣州: 游覽黃龍洞 (含游船及電瓶車)。午餐後, 游覽天子山景區 (含袁家界《阿凡達》、天下第一橋) (含纜車/觀光電梯上下)。  
經上海: 游覽黃龍洞 (含游船及電瓶車)。午餐後, 游覽天子山景區 (含袁家界《阿凡達》、天下第一橋) (含纜車/觀光電梯上下)。當天乘飛往上海。
- 第8天 張家界—廣州—馬尼拉(B)  
經廣州: 乘飛機中轉往馬尼拉, 返回溫暖的家。返回溫暖的家。  
上海—馬尼拉(B.L)  
經上海: 早上自由購物午餐後, 當天乘直航飛機回馬尼拉, 返回溫暖的家。

※※ 全程不得進入旅游購物店/車內售物/提供自費旅游安排 ※※

注: 由于航班變動, 故各地景點安排可能出現增/減。

City	Hotels
重慶	萬豪/艾美
宜昌	皇冠假日
三峽游	世紀神話 (TUE DEP) / 世紀傳奇 (SAT DEP) / 世紀榮耀 - 世界最大內河游船 (MON DEP)
張家界	陽光
上海	南新雅/ 新錦江

DEP DATES	TOUR	AIRLINE	PRICE / PAX	EBD / PAX
AUG 19, 26	CYA-6	CZ/ MU/ CX	\$ 1378	50 Days : 58 35 Days : 38
SEP 09, 16			\$ 1408	
SEP 22 CENTURY GLORY MAIDEN VOYAGE			\$ 1598	
OCT 13, 20			\$ 1498	
OCT 27. NOV 03, 10			\$ 1468	
AUG 19, 26	CYA-C9A-8	CZ/MU	\$ 1728	50 Days : \$ 68 35 Days : \$ 48
SEP 09, 16			\$ 1918	
SEP 22 CENTURY GLORY MAIDEN VOYAGE			\$ 1818	
OCT 13, 20			\$ 1758	
OCT 27. NOV 03, 10				



INCLUSIONS	EXCLUSIONS / PAX	BOOKING CONDITIONS
<ul style="list-style-type: none"> <li>✓ Roundtrip International ticket &amp; China Domestic Ticket</li> <li>✓ Bullet train Yichang - Wuhan</li> <li>✓ Hotel Accommodation (Twn. &amp; Trp.)</li> <li>✓ Meals Specified in the Itinerary</li> <li>✓ All transfer &amp; English Speaking Guide</li> <li>✓ Sightseeing Tours with entrance fees</li> <li>✓ Travel Insurance - Oriental Assurance (MAPFRE ASISTENCIA) - UNIVERSAL                             <ul style="list-style-type: none"> <li>◇ FOR OVER 70 - 90 Y/O ADD \$5/PAX/DAY SURCHARGE</li> <li>◇ FOR OVER 90 Y/O NO INSURANCE COVERAGE - LESS \$4/PAX/DAY FROM TOUR COST</li> </ul> </li> </ul>	<ul style="list-style-type: none"> <li>✗ Phil. Travel Taxes P 1620.00</li> <li>✗ Terminal fee</li> <li>Phil Terminal Fee P 550.00</li> <li>China International Terminal Fee \$ 37.00 (CZ/MU) \$ 86.00 (CX)</li> <li>✗ China Visa (Fil. Ppt.) - SINGLE ENTRY P 1700.00</li> <li>✗ Tips for Tour Guide &amp; Driver \$ 4.00/Day/Pax</li> <li>✗ Tips for Porters &amp; Bell boys</li> </ul>	<ul style="list-style-type: none"> <li>• \$ 200 Booking Deposit Upon Confirmation.</li> <li>• Deposit is Non-refundable.</li> <li>• Any unused portion is non-refundable</li> <li>• For the pax who cannot pass immigration process in any Int'l airport, the tour cost is non-refundable</li> </ul>

### CHINA VISA REQUIREMENTS

<ul style="list-style-type: none"> <li>▶ Visa Application Form</li> <li>▶ 2PC Passport size (White Background)</li> </ul>	<ul style="list-style-type: none"> <li>▶ Original Passport - 6 months valid (With Previous China visa 4 working days processing, Without Previous China Visa 7 working days processing)</li> </ul>
---	--

<ul style="list-style-type: none"> <li>⚡ RATES &amp; FLIGHT DETAILS ARE SUBJECT TO CHANGE WITHOUT PRIOR NOTICE.</li> <li>⚡ RATES ARE BASED ON JOINING GROUP DEPARTURE.</li> </ul>	<ul style="list-style-type: none"> <li>⚡ BOOK &amp; DEPOSIT 35 / 50 DAYS BEFORE THE DEPARTURE TO AVAIL EARLY BIRD DISCOUNT (EBD)</li> <li>⚡ INTERNATIONAL TICKETS &amp; HOTELS ARE SUBJECT FOR AVAILABILITY &amp; SUBJECT FOR BUY UP &amp; FARE DIFFERENCE.</li> </ul>
---	--

⚡ 價格僅適用於持有菲律賓護照的旅客, 持有其他國家護照旅客需附加費用。



## PANDA TRAVEL SERVICE INC. (GSA)

**Binondo Office:**  
479 - 481 Sto. Cristo St.,  
Binondo, Manila  
Tel: (632) 242-2585  
Fax: (632) 242-2652

**Greenhills Office:**  
2/F G SQUARE Building, 212 Wilson  
Street, Greenhills, San Juan City  
Tel: (632) 723-2712; 723-2639;  
723-3491; 5704044  
Fax: (632) 501-6120

**Email:**  
panda@pandatour.com  
marketing@pandatour.com  
**Website:**  
www.chinapanorama.com

